

Building Elements 3

Laurence D. Finston

Created: June 26, 2012

Last updated: July 4, 2012

This document is part of GNU 3DLDF, a package for three-dimensional drawing.

Copyright © 2012, 2013 The Free Software Foundation

GNU 3DLDF is free software; you can redistribute it and/or modify it under the terms of the GNU General Public License as published by the Free Software Foundation; either version 3 of the License, or (at your option) any later version.

GNU 3DLDF is distributed in the hope that it will be useful, but WITHOUT ANY WARRANTY; without even the implied warranty of MERCHANTABILITY or FITNESS FOR A PARTICULAR PURPOSE. See the GNU General Public License for more details.

You should have received a copy of the GNU General Public License along with GNU 3DLDF; if not, write to the Free Software Foundation, Inc.,
51 Franklin St, Fifth Floor, Boston, MA 02110-1301 USA

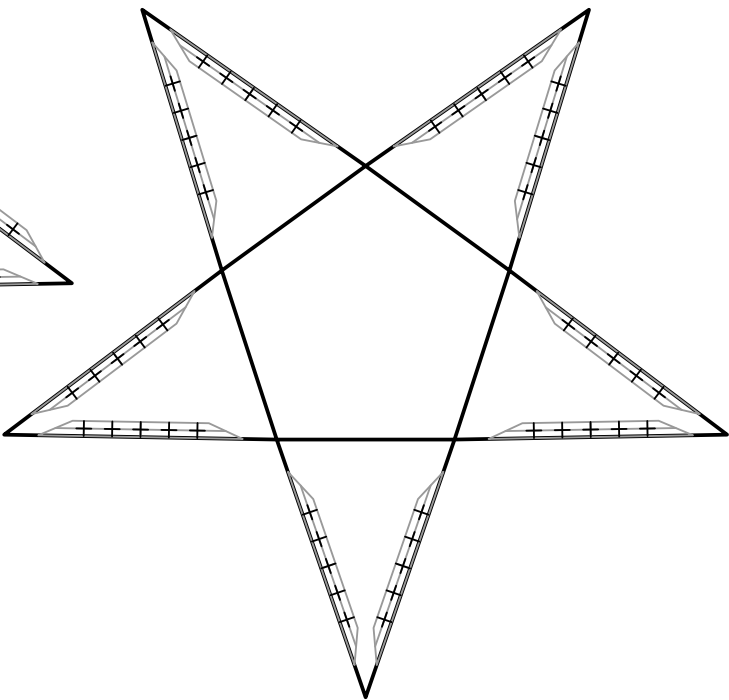
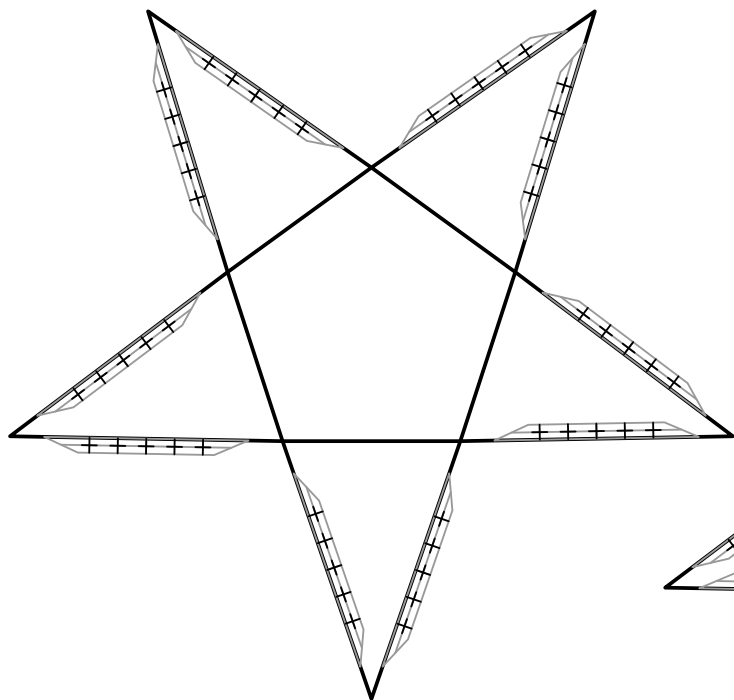
Contents

Instructions

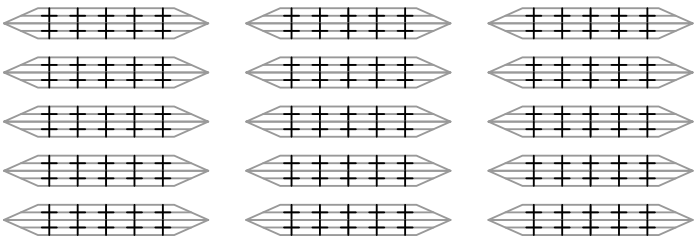


Pyramids with Regular Polygon Bases

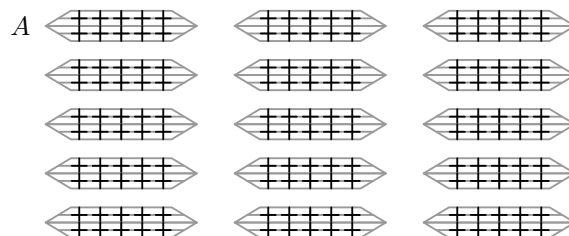
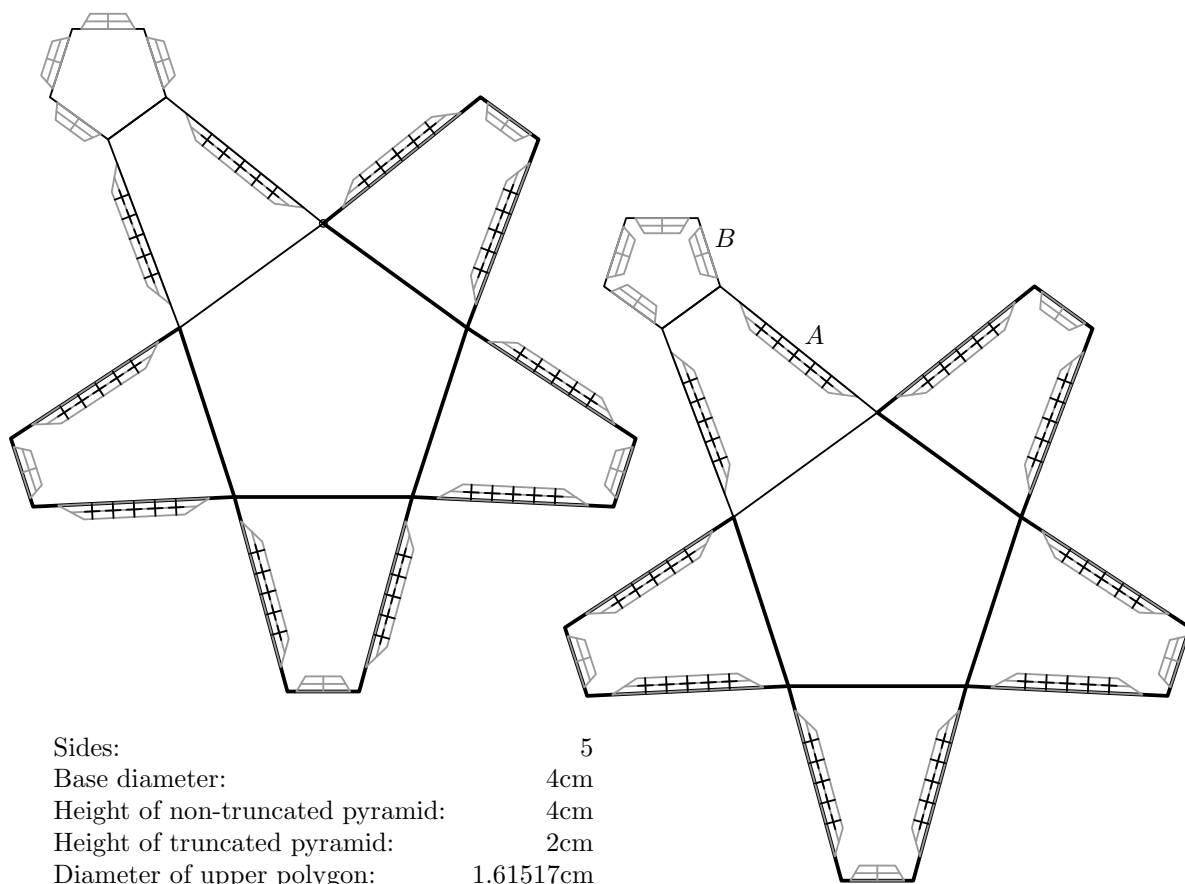
Non-Truncated



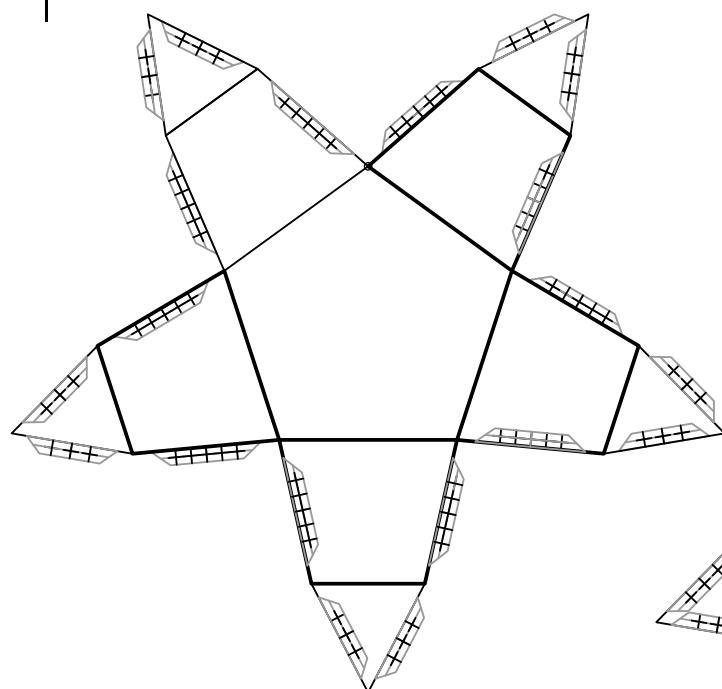
Sides: 5
Base diameter: 4cm
Height: 3cm



Truncated Pyramids



Obelisks



Sides: 5
 Base diameter: 4cm
 Height of lower section: 1cm
 Height of upper section: 1cm
 Diameter of upper polygon: 2.55223cm

